

APARTMENT 51

PARK MODERN

Hyde Park, London

3 Bedrooms

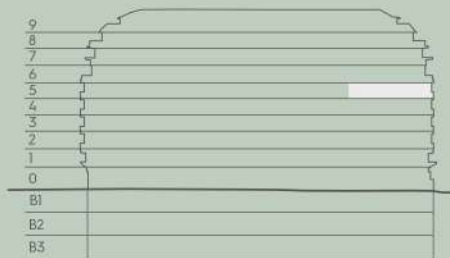
Level 5

GROSS INTERNAL AREA 252 SQ M / 2,696 SQ FT

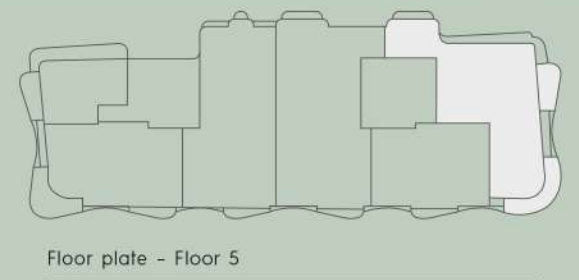
TERRACES 19 SQ M / 208 SQ FT



Living/dining	7.31 x 10.02m	24' x 32'10" ft
Kitchen	5.11 x 3.45m	16'9" x 11'4" ft
Master Suite	5.81 x 5.40m	19'1" x 17'9" ft
Master Ensuite	3.03 x 3.59m	9'11" x 11'9" ft
Bedroom 2	5.35 x 3.60m	17'6" x 11'10" ft
Bedroom 3	6.29 x 3.33m	17'4" x 11' ft



Floor Locator - Floor 5



Floor plate - Floor 5

The areas and dimensions provided on these floorplans are subject to design development and are approximate and for guidance only at this stage. Further dimensions, including clear heights of windows and ceilings, balcony and terrace areas may vary in size and are subject to design development. Please speak to the sales team for details. Indicative areas are measured as gross internal areas (GIA) using the RICS code of measurement, 6th Edition.

Sunrise/sunset is a indicative guide only and is not to be used for exact positioning of the sun in relation to the apartment.

Scale 1:100

